

# **IDHANT ENGINEERING PRIVATE LIMITED**

SPECIALITY COATING SERVICES





PIONEERING ON-SITE SURFACE COATING  
TREATMENTS FOR INFRASTRUCTURES



# About us

IDHANT has been serving the industry with our speciality coatings sourced from Japan, Holland and the US since 2019.

We now have on-contract paint manufacturing facility for our needs, enabling us to create specialised pre and post treatment coatings as per the site requirements. This has enriched in constant R&D of our services, ultimately allowing us to create services that are functional, creative, sustainable and responsible.





# What we do?

1. Site survey - understand the site
2. Study the application
3. Formulate a coating
4. Budget and quote
5. Application engineering - logistics, material handling, on-site formulation, application
6. Observation post execution
7. Warranty





# Our core services:

1. Thermo-reflective coatings
2. Anti-corrosion treatments
3. Abrasion protection treatments
4. Waterproofing - exterior surface

# Thermo-Reflective Coatings

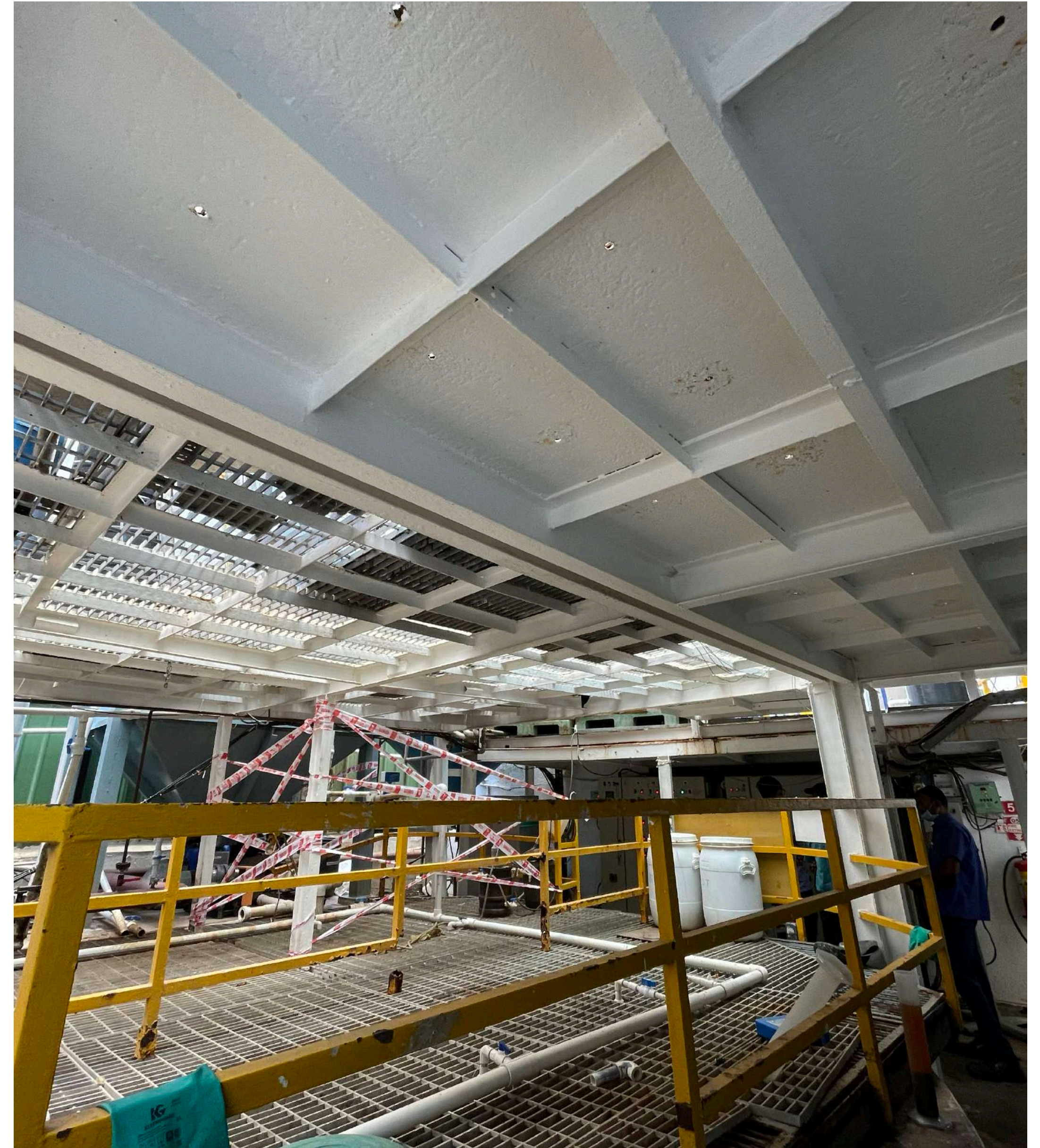
1. On-site application
2. >90% sunlight reflection
3. Up to 40% surface temperature reduction, up to 30% energy savings for air conditioned structures
4. Applicable on any surface
5. Water based materials
6. Eco-friendly
7. Waterproofing advantage on RCC
8. Anti-corrosion advantage on metal structures
9. Easy to maintain - backed up by AMC
10. Life expectancy > 10 years





# Anti-Corrosion Treatments

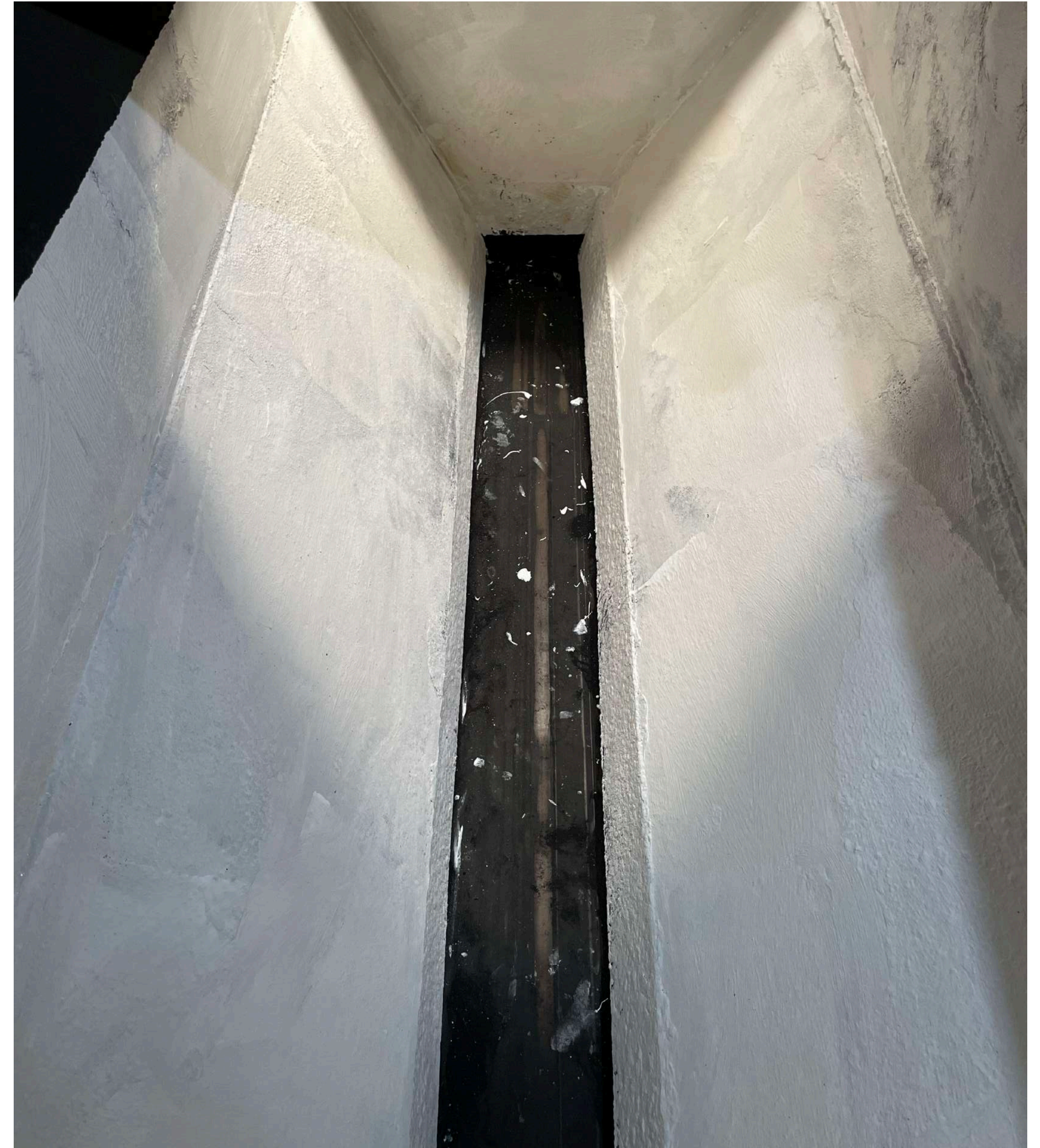
1. On-site application
2. Chemically inactive membrane
3. Elasticity 250%
4. Non-sticky top layer
5. Rust neutralising as a pre treatment
6. Water repellent
7. Trained team
8. Heat resistant
9. Dust resistant
10. Zero VOC
11. Backed up by AMC





# Abrasion Protection Treatments

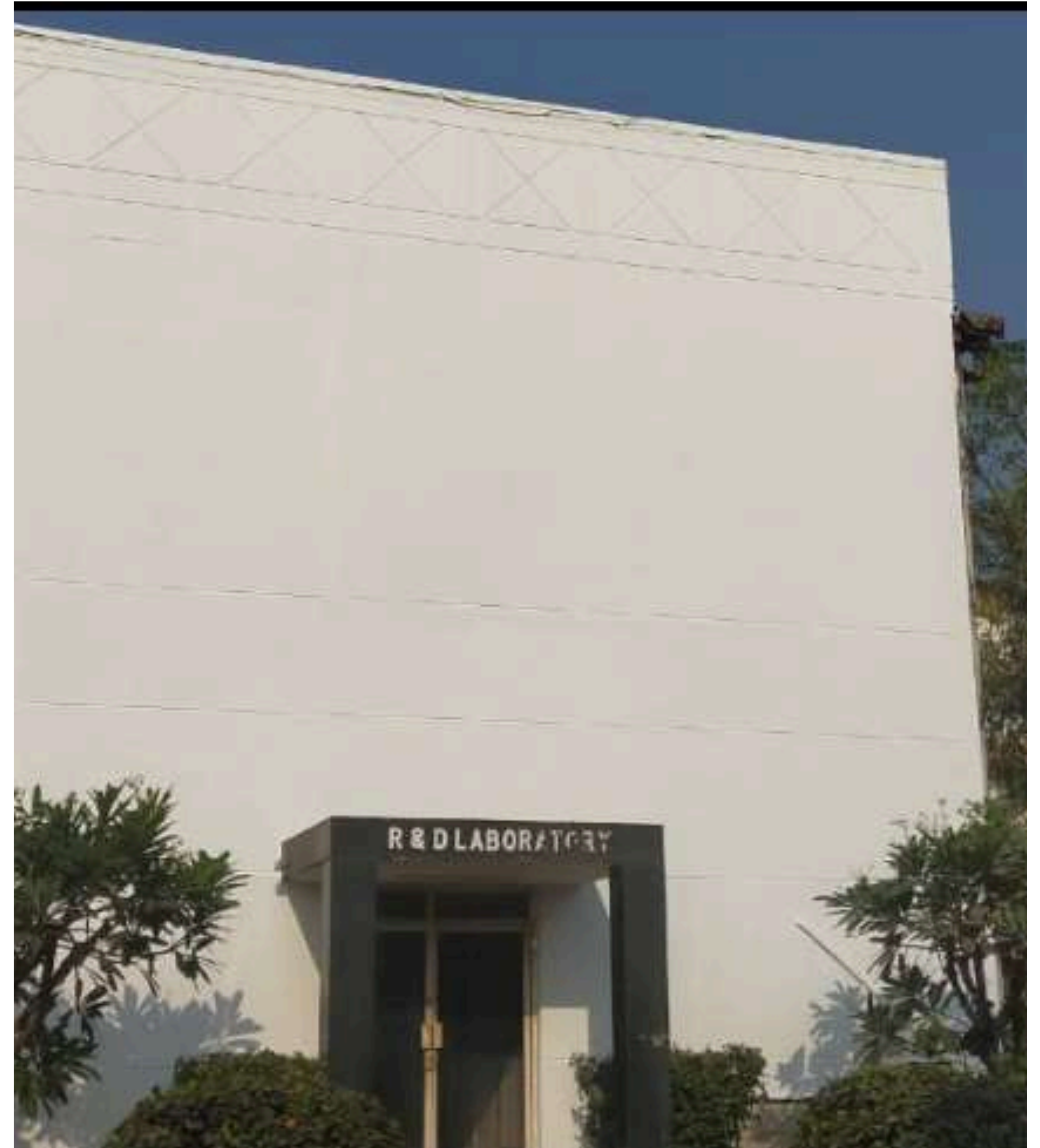
1. Applications like sand hoppers in foundries require highly abrasion resistant, corrosion resistant coatings
2. Swift flow of sand
3. No ratholing
4. No flaking
5. Non sticky layer
6. Chemically inactive
7. Water based
8. Eco friendly
9. Water repellent
10. Zero VOC
11. Backed up by AMC





# Waterproofing

1. 250 microns of water based layer over RCC structures
2. Gap filling by core material
3. Surface preparation by trained team
4. Heat resistant membrane
5. Non sticky layer
6. Chemically inactive
7. Highly water repellent top layer
8. Elastic membrane
9. Eco friendly
10. Backed up by AMC





# Disruptive approach by IDHANT

TRC against:

1. Foam sheets
2. Sandwich panels
3. Green nets
4. Cool coats
5. Composite walls

For:

1. Nonflammability
2. Less weight
3. Durability
4. Performance
5. Cost

ACT against:

1. Conventional sand blasting
2. Aluminium/silver paints
3. Zinc coatings
4. Epoxy
5. Galvanising

For:

1. Durability
2. Performance
3. Cost
4. Life
5. On-site application



# How it works?

## **TRC (Thermo-Reflective Coatings):**

The main component of TRC is water-based acrylic emulsion that reflects  $>93\%$  of solar heat, that eventually cuts down surface temperature by up to 40%. With  $SRI > 120$ , TRC acts as the highest performing heat shield on given surface!

## **ACT (Anti-Corrosion Treatment):**

Rust on the existing surface is neutralised by our proprietary rust neutralisers, on-site. A layer of ACT, that is water based, chemically inactive and elastic, acts as protection against corrosion that occurs due to fumes, dust, heat and moisture!



# Customer Feedback:

“We appreciate timely completion and excellent workmanship.”

–**Mr. C B Joshi, DGM, Civil, Sudarshan Chemicals Ltd**

“We compliment outstanding performance of anti-corrosion treatment done at our ETP.”

–**Mr. Manoj Rane, Sr. Manager, Works, Indus Biotech Ltd**

“Expert service resulted in reduced power costs by 30%.”

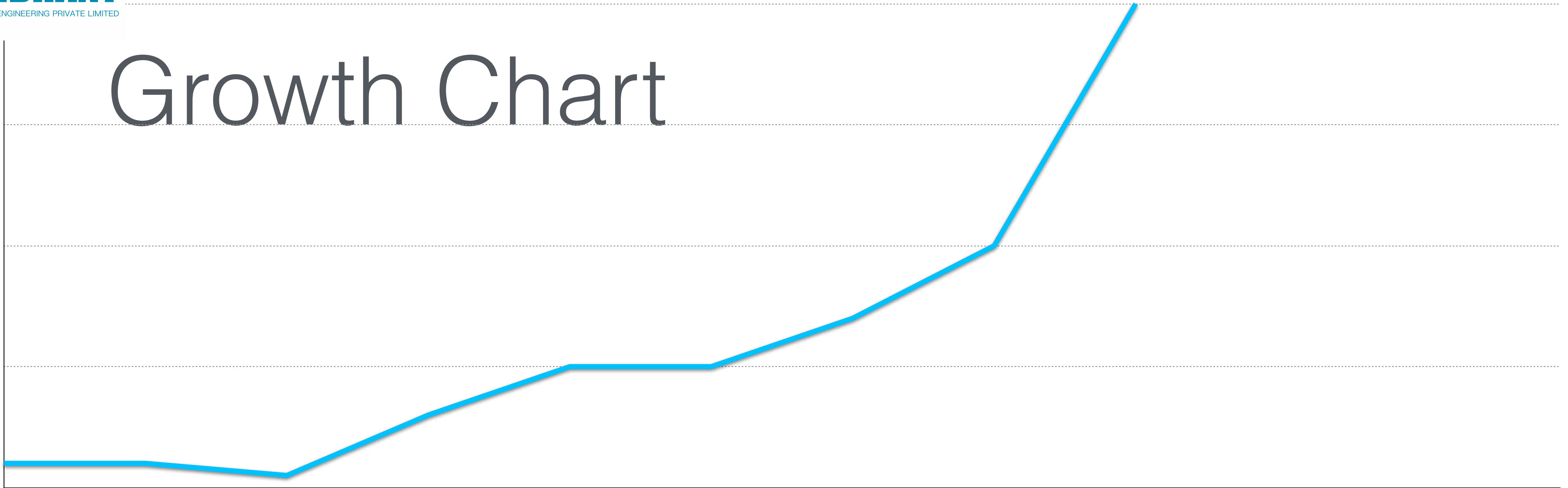
–**Mr. Manoj Bhole, Maintenance Manager, FDC Limited**

“Idhant’s treatments are very useful for foundry applications to save on enormous damages due to corrosion.”

–**Mr. Sandeep Pawar, Zanvar Group**



# Growth Chart

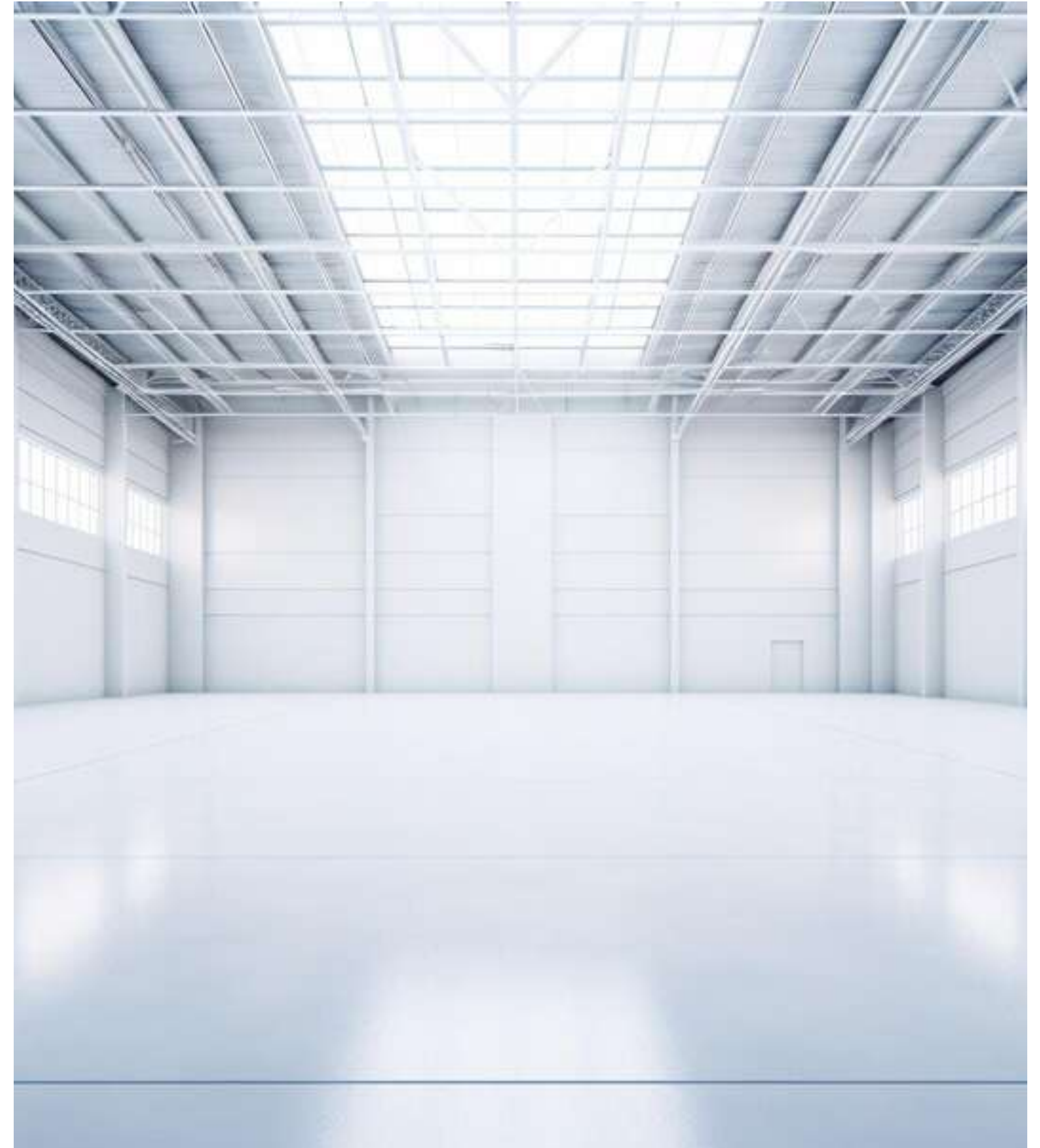


We started with pathways for temples serviced through our TRC. We then eventually developed ACT in 2021, serviced ETPs and roofing sheets at various smelting units. In 2023, we specialised in ACT for roofing and cladding sheets for sheets and structures above furnace areas along with abrasion protection treatments for sand hoppers and we have been welcomed by foundries since!



# Projected expansions

1. State-of-the-art automated paint booth facility at Kolhapur for mass production of coated sheets.
2. Salt spray chamber for corrosion R&D at our facility (currently outsourced).
3. Automated robotic painting setup for complex structures.
4. Sales office at Doha, Qatar.
5. Robotic on-site mobile coating setup for coating of sheets and structures.





# Application areas

- Dairy farms
- Food processing units
- Cold storages
- Steel plants
- Commercial buildings
- Transport vehicles
- Smelting units
- Hospitals
- Schools
- Pharmaceutical industries
- Airports, shipyards and ports
- Ship building
- Containers
- Pipelines and ONGCs
- Warehouses
- Power plants
- Bridges
- Religious places
- Plant and Machinery
- Automobiles



“Here to protect.”

**[www.idhant.in](http://www.idhant.in), [info@idhant.in](mailto:info@idhant.in), +91-9421976333**